

82.5 kVA - 200 kVA GENSETS

Gensets powered by best-in-class Engine, Alternator & Controller

Mahindra mPOWER Engine

- Higher block loading capacity
- Linear fuel consumption
- Low ownership cost
- Mechanical / Common rail fuel injection system
- Modular cylinder head for easy serviceability

Genset Controller

Premium controller that delivers accurate metering, best-in-class protection for optimum genset performance. With Genset controller, the genset is always protected against breakdowns from electrical or mechanical flaws and thereby ensures maximum uptime.

Key features

- Compatible with Auto Mains Failure facility
- 500 event log memory storage
- Comes with RS 485 port for modbus communication as standard scope
- Activation time delay for oil pressure, coolant temperature, voltage and frequency faults
- Routine maintenance & service alerts
- 5 configurable inputs
- Sleep mode
- Remote start & stop facility

Genset Monitoring (Key Parameters)

- Generator/load power (kW, kVA, kVAR, pf), generator/load current, battery voltage
- RPM, running hours, oil pressure, engine temperature and fuel level

Genset Protection (Key Parameters)

- High engine temperature, low oil pressure, engine over/under speed
- Over current, over/under voltage, Charging alternator low voltage

Alternator

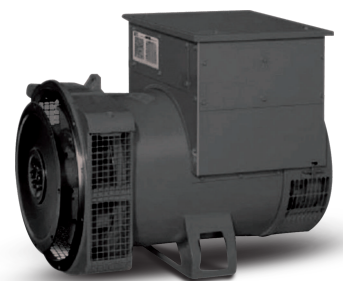
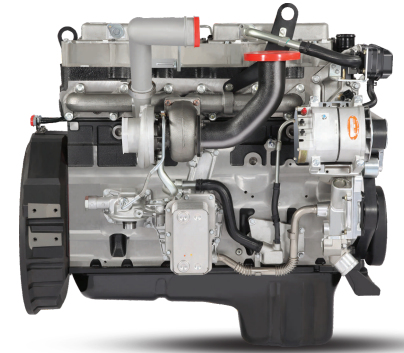
- Brushless type, screen protected, revolving field, self-excited alternator conforming to IS/IEC 60034-1
- 3 Phase reconnect type winding with 12 terminals brought out for connection
- Superior winding for harmonic reduction
- Epoxy coating for consistent performance in all weather conditions
- Better transient response capability

Acoustic Enclosure

- Aesthetically designed at Mahindra Research Valley
- Designed by using latest technology aids like Computer aided Engineering (CAE), Noise-Vibration Harshness Engineering (NVH) and Computational Fluid Dynamics Engineering (CFD) which resulted in lowest foot print & lowest noise levels

Optional Accessories

PMG alternator, RTD/BTD Space Heater, Coolant / Oil heater, Heavy duty air cleaner, synchronization. For more details kindly contact our authorised representative





Genset Specification

Genset Prime Rating (kVA)	82.5	100	125	160	180	200
Genset Prime Rating (KW)	66	80	100	128	144	160
Phase/Voltage [V]	3/415					
Power Factor (lagging)	0.8					
Current [A]	115	139	174	223	251	278
Frequency [Hz] & RPM	50/1500					
Governing class	G2 as per ISO 8528 Part V					
Starting system	12 V DC Elec	12 V DC Elec	24 V DC Elec	24 V DC Elec	24 V DC Elec	24 V DC Elec
Fuel tank capacity in liters	200	200	219	300	400	400
Canopy dimensions w/o Silencer (L x W x H*) (mm) approx	3200 x 1200 x 1600	3200 x 1200 x 1600	3750 x 1030 x 1550	3790 x 1300 x 1800	4500 x 1400 x 1800	4500 x 1400 x 1800
Genset Weight in Kg (approx.)	1700	1750	1900	2350	2750	2800

Engine Specification

Make / Series	Mahindra mPOWER					
Model	mPower41015G	mPower41265G	mPower61565G	mPower61995G	mPower62235G	mPower62485G
Rated Power at 100% Load (HP)	101	126	156	199	223	248
Aspiration	TCA	TCA	TCA	TCA	TCA	TCA
No. of cylinders	4	4	6	6	6	6
Bore x Stroke (mm)	105 x 137	105 x 137	105 x 137	105 x 137	105 x 137	105 x 137
Displacement (lit)	4.8	4.8	7.2	7.2	7.2	7.2
Fuel consumption @ 75% load (lit/hr) ^	13.9	17.3	21.4	27.8	28.7	33.3
Fuel consumption @ 100% load (lit/hr) ^	18.1	23.1	28	36.7	38.2	40.8
Lube oil specification	15W40 API CI4+	15W40 API CI4+	15W40 API CI4+	15W40 API CI4+	15W40 API CI4+	15W40 API CI4+
Total lubrication system capacity (liters)	13.5	13.5	20.2	20.2	20.2	20.2
Lube oil consumption @ full load \$	0.1% of Fuel Consumption					
Lube oil change period (hrs.)	500					
Radiator coolant capacity (liters)	19	19	22.5	25	24	24

Alternator

Make	Mahindra Powerol
Enclosure Type	IP23
Voltage regulation	±1%
Class of insulation	Class H
Maximum Unbalanced Load across Phases	25%

Notes:

Above specifications are subject to change without prior notice due to continuous product improvements

All engines & alternators conform to respective IS standards

All the genset specifications conform to ISO 8528 standard

Fuel - High Speed Diesel (HSD IS 1460 : 2005)

^ Considering 0.845 specific gravity of diesel, 5% tolerance

\$ Considering 0.89 specific gravity of oil

* For Standby duty, contact Powerol authorized representative

All specifications are at standard NTP operating conditions